

THROUGH WALL IMAGING SYSTEM



PRODUCT INFORMATION

A compact, lightweight and portable 3D radar life detector. It adopts MIMO ultra - wideband radar technology to achieve precise detection. It has functions such as detecting vital signs through walls and ruins, 3D positioning imaging, posture recognition, multi - target real - time positioning, and full wireless connection.

It is applicable to scenarios such as anti - terrorism and stability maintenance, urban combat reconnaissance, and emergency rescue, providing efficient and accurate detection support for special tasks.



APPLICATION SCENARIO



Through Wall Imaging System

TWR-III



FEATURES

3D Positioning: Can locate the coordinates of the target on the X - axis and Y - axis, and identify posture information.

High Professionalism: Real - time positioning of multiple moving and stationary targets. It can display the number, status, location, etc. of targets for precise detection.

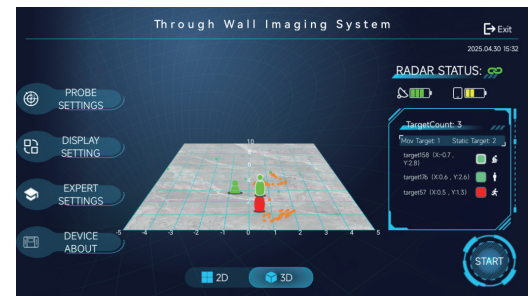
Rapid Deployment: Supports two - handed operation or can be assisted by a retractable tripod for easy and rapid deployment.

Powerful Functionality: Has strong anti - interference performance. It can continuously penetrate multiple discontinuous media to accurately detect targets.

High - Protection Design: Designed with a high - protection level. The box is equipped with a hard buffer layer inside for easy transportation.

Compact and Flexible: Small in size and light in weight, easy to carry, suitable for individual combat.

USER INTERFACE



TECHNICAL SPECIFICATIONS

Horizontal Detection Angle	120°
Number of Detectable Targets	≥3
Coordinate Display	Equipped with X, Y, Z (posture) coordinates
Human Posture Recognition	The device has the function of recognizing human postures (standing or crouching)
Connection Method	WIFI
Communication Distance	100 meters
Detection Environment	Ruins, air, through - wall, wood
Detection Distance (penetrating a 30cm foam brick wall)	Moving Target: ≤25m Stationary Target: ≤20m
Detection Accuracy (penetrating a 30cm foam brick wall)	the average detection error of the longitudinal distance ≤ 30cm the average detection error of the transverse distance ≤ 30cm
Detection Data Recording and Playback	Equipped with detection data recording and playback functions
Power Supply Method	2 lithium - ion batteries (specification: 7.4V, 4800mA)
Dimensions	420*280*58mm (±5mm)
Weight	3.3kg (±0.05kg) (including 2 batteries)
Operating Time	10h
Operating Temperature	-20°C ~ 60°C
Storage Temperature	-40°C ~ 70°C
System Configuration	Display and control terminal, radar main unit, antenna, tripod, adapter, charger, instruction manual, packing box.



Beijing LSJ Technology Development Co., Ltd.



Tel: +86 19388914420
WeChat: +86 19388914420
WhatsApp: +86 19388914420
E-mail: jessica@lsj-te.com
Website: www.lsj-te.com
Address: Floors 3 to 17, Building 5,
Courtyard 1, Hangfeng Road, Fengtai
District, Beijing, China.